





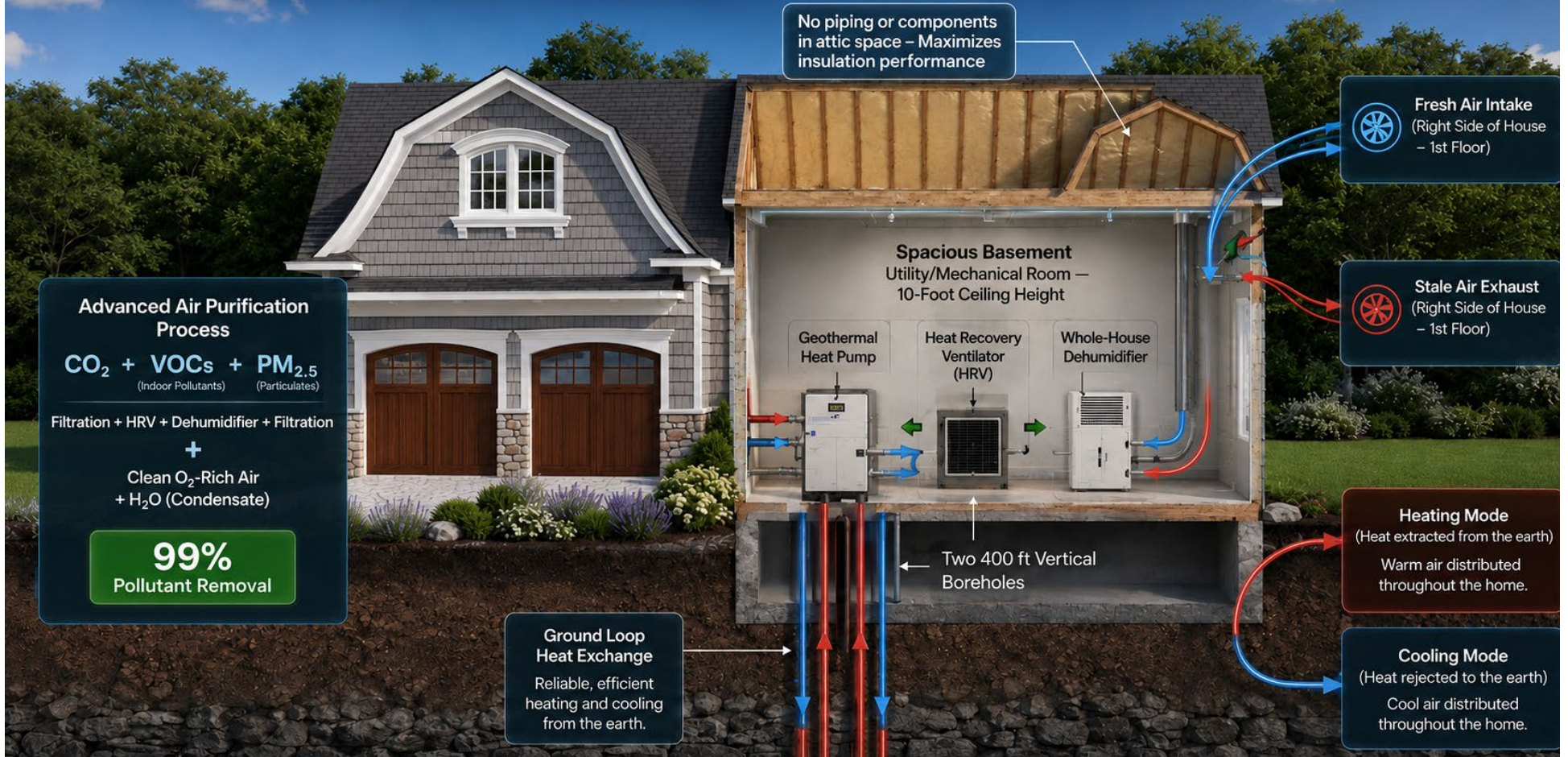






Complete Comfort System at 26 Lamberts Lane

Geothermal + HRV + Dehumidifier







EXTERIOR SIDING SELECTION

ELEGANT. DURABLE. TIMELESS.



STYLE REFERENCE



COLOR & TEXTURE REFERENCE



WHY THIS SIDING WORKS



Authentic Cedar-Shake Look

Classic texture and shadow lines for true curb appeal.



Fade Resistant

Advanced color technology helps resist fading from the elements.



Low Maintenance

No painting or staining required—easy to clean and built to last.



Great for Coastal New England

Engineered to withstand coastal weather and humidity.

BEST EXTERIOR SIDING – CERTAINTED CEDAR IMPRESSIONS® STYLE



LIGHT GRAY
Soft, airy gray for a bright and timeless look.



COASTAL GRAY
Balanced mid-tone gray with classic coastal charm.

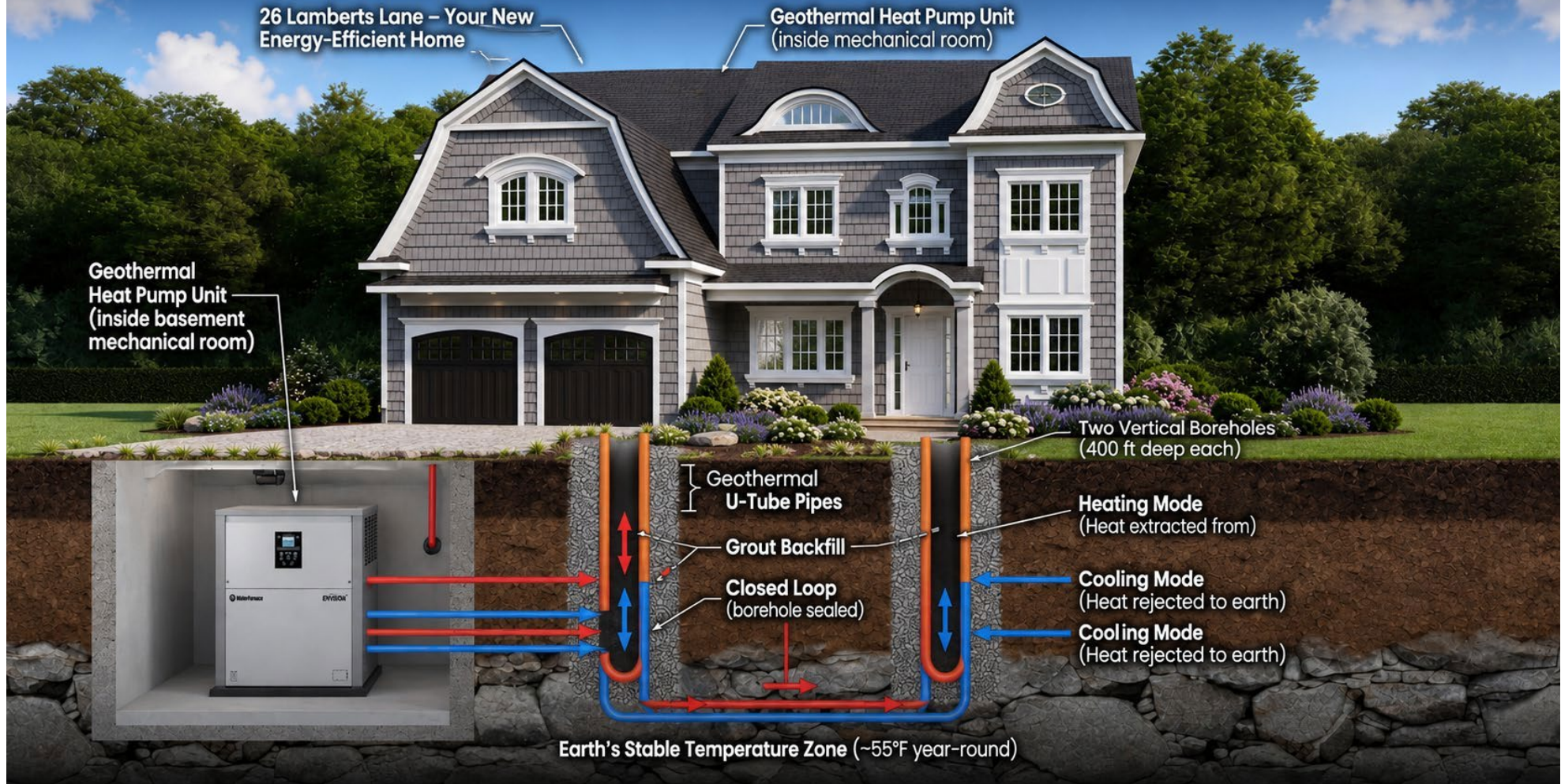


WEATHERED GRAY
Natural, weathered tone for understated elegance.



CHARCOAL GRAY
Bold, deep gray for striking contrast and sophistication.

Geothermal Heating & Cooling at 26 Lamberts Lane – Vertical Borehole System



RADIANT FLOOR HEATING

COMFORT FROM THE GROUND UP

Efficient, even comfort on every level.
Radiant heat warms the floors and people—
not the air.



Typical radiant floor
water temperature:
about **85–110°F**



Finished floor surface
usually feels about
75–85°F



Gentle even heat
rises from the floor

PRIMARY COMFORT ZONE:
FIRST ~6 FT WHERE PEOPLE
LIVE AND FEEL HEAT MOST

Radiant floors focus warmth
in the occupied zone,
reducing wasted heat high
near the ceiling.

Approx.
6 ft

FIRST-FLOOR RADIANT ASSEMBLY



- 1 Finished floor (wood/tile)
- 2 Floor underlayment
- 3 Radiant tubing (PEX)
- 4 Insulation/thermal panel
- 5 Subfloor
- 6 Joists

**RADIANT SLAB KEEPS
BASEMENT WARM, DRY,
AND COMFORTABLE.**

RADIANT HEATING SYSTEM

Closed-loop hydronic system



- SUPPLY (WARM)**
Heated water
circulates from
manifold to tubing.
- RETURN (COOLER)**
Cooler water returns
to the manifold for
reheating.

Heated water is quietly circulated
through the tubing in the floors.
Zoned control for consistent comfort
and efficiency.

RADIANT HEAT ADVANTAGE



RADIANT HEAT

Warms surfaces and people
directly. More even comfort
with less overheating of
unused upper air space.

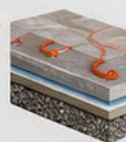


FORCED AIR (TYPICAL)

Heats the entire air volume.
Heat rises and collects near
the ceiling—less comfort,
more energy waste.

BASEMENT SLAB ASSEMBLY

- 1 Concrete slab with radiant tubing
- 2 Vapor barrier
- 3 Rigid insulation
- 4 Gravel base



ENERGY EFFICIENT

Lower water temps,
less energy use,
high comfort.



EVEN COMFORT

No hot or cold spots.
Warm floors,
happy feet.



HEALTHIER AIR

No ducts, less dust.
Quieter, cleaner
indoor environment.



BUILT TO LAST

Durable systems
with long-term
reliability.

Appendix A. Exterior Style Options

The following exterior renderings and style references are carried forward from the original document for buyer discussion. Final selections should be coordinated with the builder, designer, budget allowance, and product availability.



Exterior option – no roof eyebrow window



Exterior option – white coastal style.



Exterior option - gray some stone coastal style.



Exterior option - light gray siding with warm garage doors.



Exterior option - light siding with dark window accents.



Exterior option - cedar shake accent style.



Exterior option - warm stucco/shingle blend.



Exterior option - blue coastal style.



Exterior option - evening rendering with mixed materials.



Exterior option - evening rendering with light blue siding.



Exterior option - alternate roof style.



Exterior option - stucco concept.



Exterior option – light gray, alternate roof style- no eyebrow on roof



Exterior option – white siding, steel roof, alternate roof style no eyebrow on roof